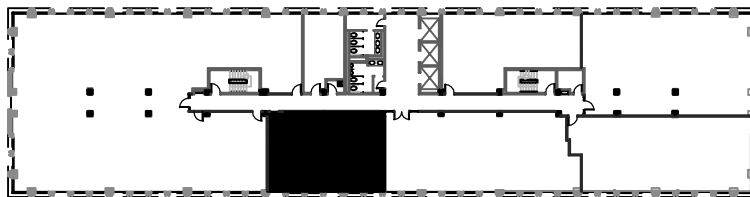


1/8" = 1'-0"



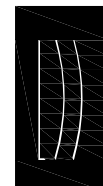
NORTHSIDE TOWER

6065 ROSWELL ROAD
ATLANTA, GA 30328

1,182 rsf
Suite 830



BAKER DENNARD & GOETZ
COMMERCIAL REAL ESTATE



**Lyman
Davidson
Dooley, Inc.**

ARCHITECTURE
PLANNING
INTERIOR DESIGN