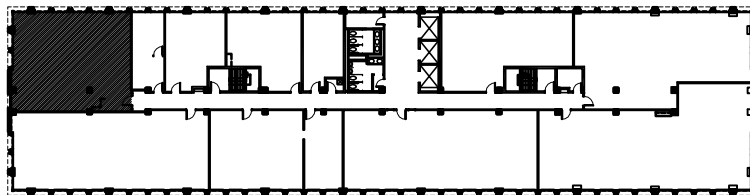


1/8" = 1'-0"



NORTHSIDE TOWER

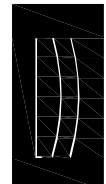
6065 ROSWELL ROAD
ATLANTA, GA 30328

1,500 rsf
Suite 200



BAKER DENNARD & GOETZ

COMMERCIAL REAL ESTATE



**Lyman
Davidson
Dooley, Inc.**

ARCHITECTURE
PLANNING
INTERIOR DESIGN