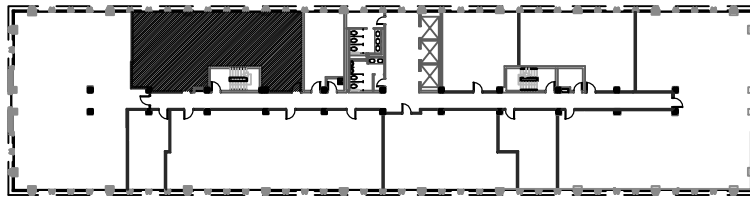


□ Existing Wall to Remain

1/8" = 1'-0"

■ New Wall



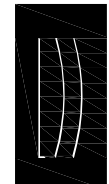
# NORTHSIDE TOWER

6065 ROSWELL ROAD  
ATLANTA, GA 30328

1,522 rsf  
Suite 415



**BAKER DENNARD & GOETZ**  
COMMERCIAL REAL ESTATE



Lyman  
Davidson  
Dooley, Inc.

ARCHITECTURE  
PLANNING  
INTERIOR DESIGN