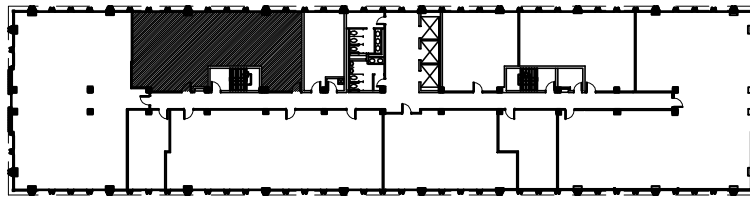


1/8" = 1'-0"



NORTHSIDE TOWER

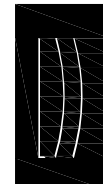
6065 ROSWELL ROAD
ATLANTA, GA 30328

1,523 rsf
Suite 415



BAKER DENNARD & GOETZ

COMMERCIAL REAL ESTATE



Lyman
Davidson
Dooley, Inc.

ARCHITECTURE
PLANNING
INTERIOR DESIGN