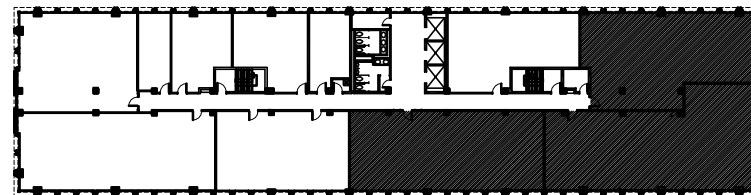


3/32" = 1'-0"



# NORTHSIDE TOWER

6065 ROSWELL ROAD  
ATLANTA, GA 30328

**6,262 rsf**  
**Suite 220**



BAKER DENNARD & GOETZ  
COMMERCIAL REAL ESTATE



Lyman  
Davidson  
Dooley, Inc.

ARCHITECTURE  
PLANNING  
INTERIOR DESIGN