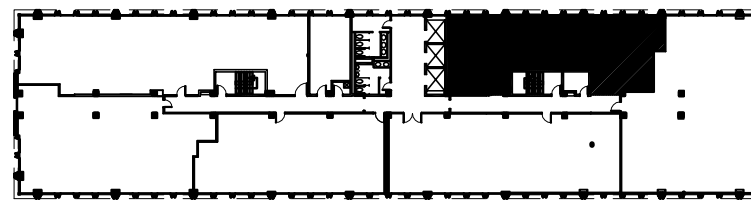


1/8" = 1'-0"



NORTHSIDE TOWER

6065 ROSWELL ROAD
ATLANTA, GA 30328

1,845 rsf
Suite 960

BD&G
BAKER DENNARD & GOETZ
COMMERCIAL REAL ESTATE

Lyman
Davidson
Dooley, Inc.
ARCHITECTURE
PLANNING
INTERIOR DESIGN